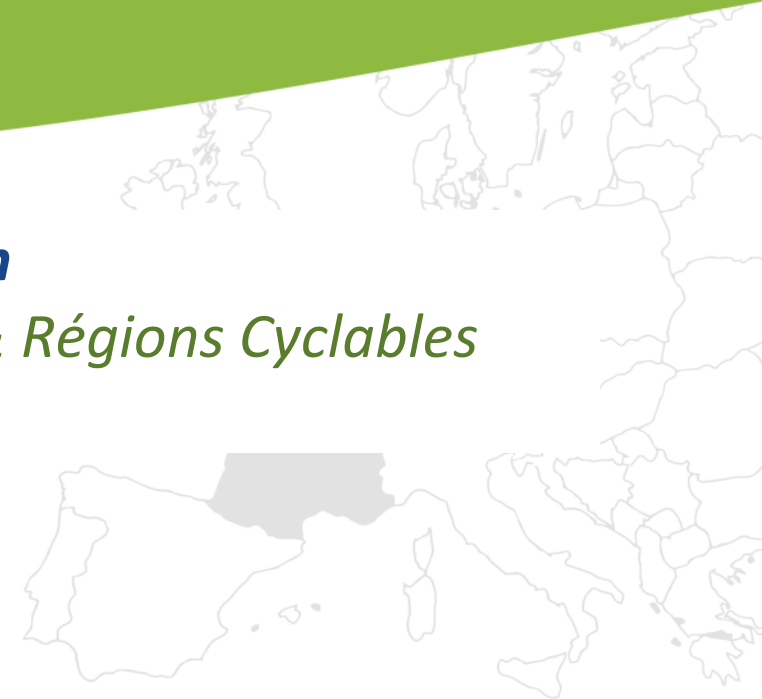


# LAUNCHING A GOVERNANCE ON A CYCLE ROUTE : WHERE TO START ? *CASE STUDY ON LA SEINE À VÉLO*

***Velo-city 2017 – Arnhem Nijmegen***

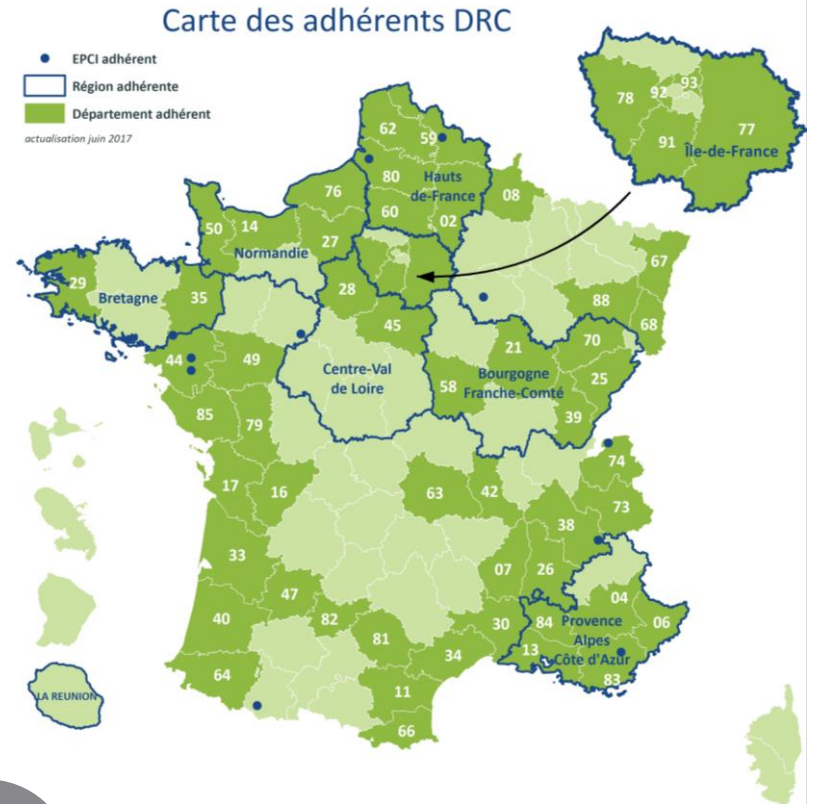
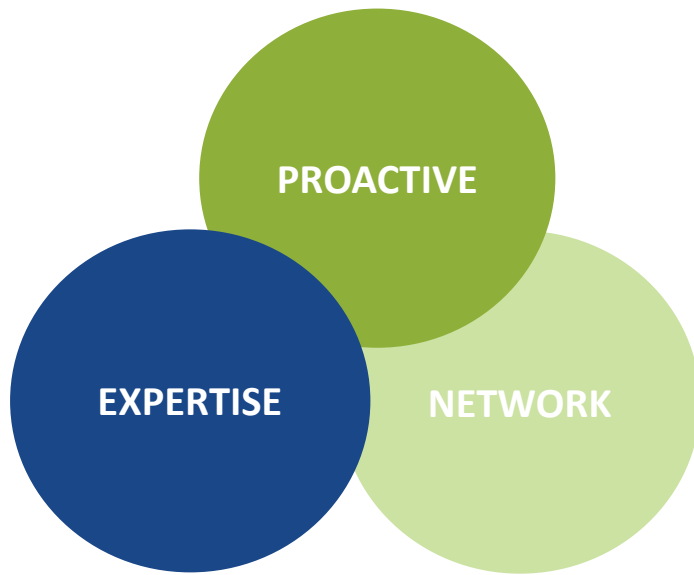
*Agathe Daudibon, Départements & Régions Cyclables*

*15 juin 2017*



# WHO ARE THE DÉPARTEMENTS & RÉGIONS CYCLABLES ?

Local and regional authorities' network engaged in the development of cycling in France



74

**MEMBERS** : Regions, Départements, Intercommunalities

National coordination Centre for EuroVelo in France



# NATIONAL COORDINATION CENTRE FOR EUROVELO AND NATIONAL CYCLE ROUTES

## MONITORING

- GIS data
- Developments & actions
- Quantitative usage data
- Best practices
- Itinerary committees
- Regular contacts

## COMMUNICATION

- General overviews on our website
- Update of EuroVelo.com's content for France
- Link with FranceVeloTourisme.com
- Article (print & web)
- Publications of tools & documents

DÉPARTEMENTS & RÉGIONS  
**CYCLABLES**



## GOVERNANCE

- Member of France Vélo Tourisme (PPP)
- Member of the national committee on cycle tourism
- Support launching new partnerships
- Publication of tools & documents on itinerary committees

## NETWORKING

- Annual meeting « Club itinéraires »
- Contact database up-to-date
- Regular contacts
- Questions & answers

# CONTEXT



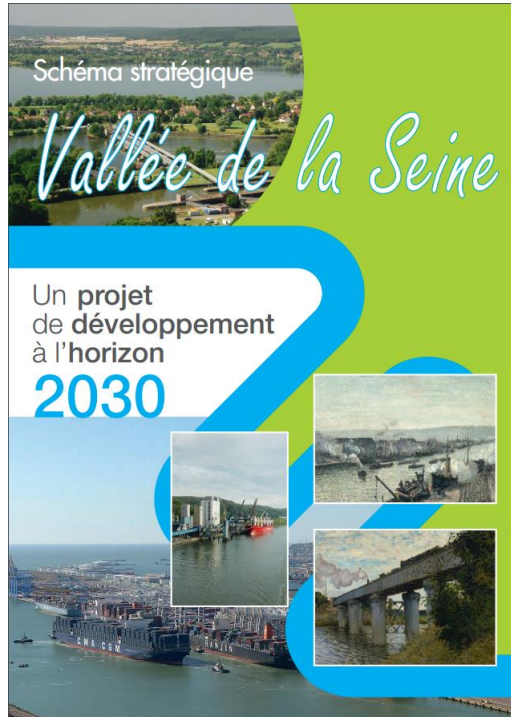
**Seine Valley** : connect Paris to the Chanel



# CONTEXT



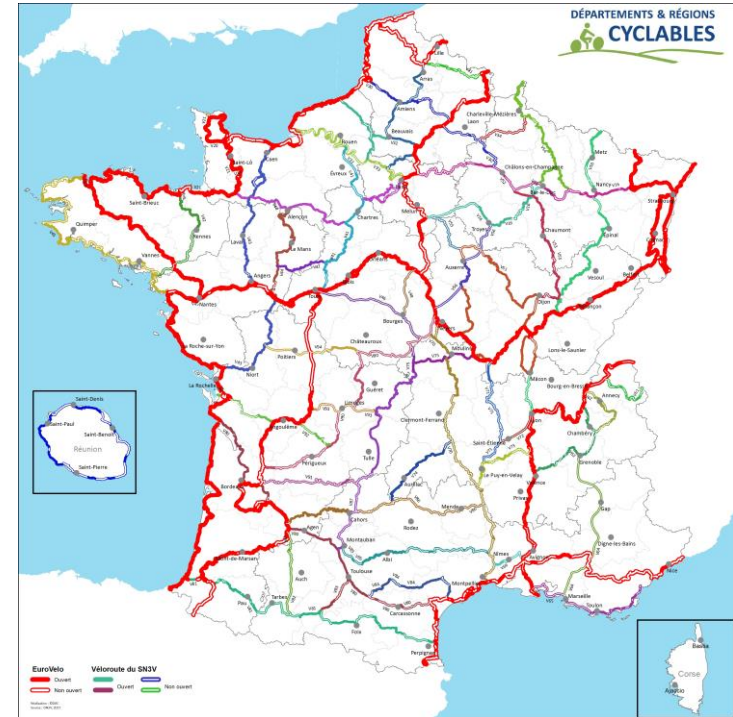
# CONTEXT



*Strategic framework*



**FUNDING  
FROM A STATE-REGIONS  
PARTNERSHIP**



*National Cycle Network*



**V33  
CYCLE ROUTE ALONG THE SEINE**

# THE PROJECT



Support setting up a partnership  
on La Seine à Vélo / V33

**18** months

Budget : **30 000€**

**80%** State-Region co-funding

**15** partners

## MISSION :

Create good conditions  
to launch a partnership on  
La Seine à Vélo / V33

# WHAT HAS BEEN ACHIEVED ?

## 4 meetings :

- 2 with political representatives
- 2 with technical representatives

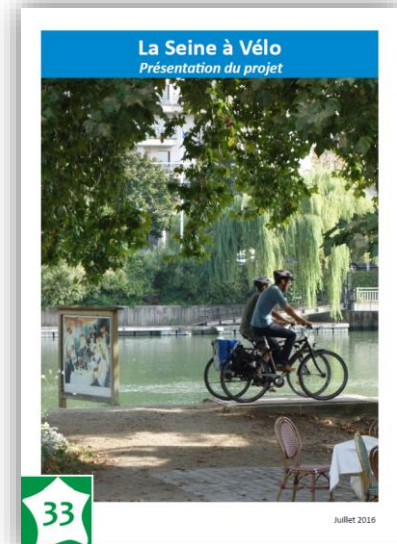
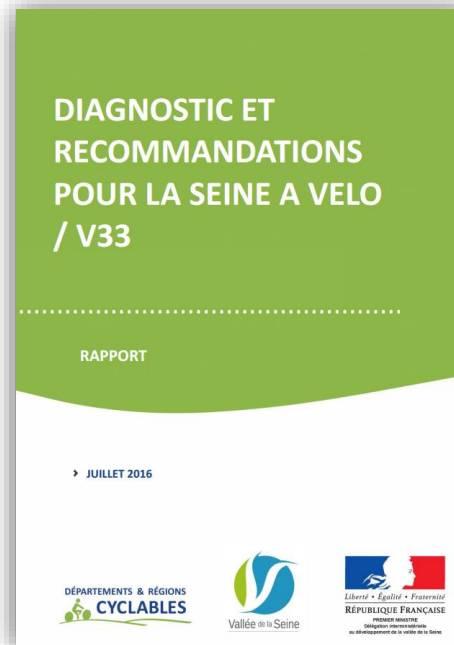
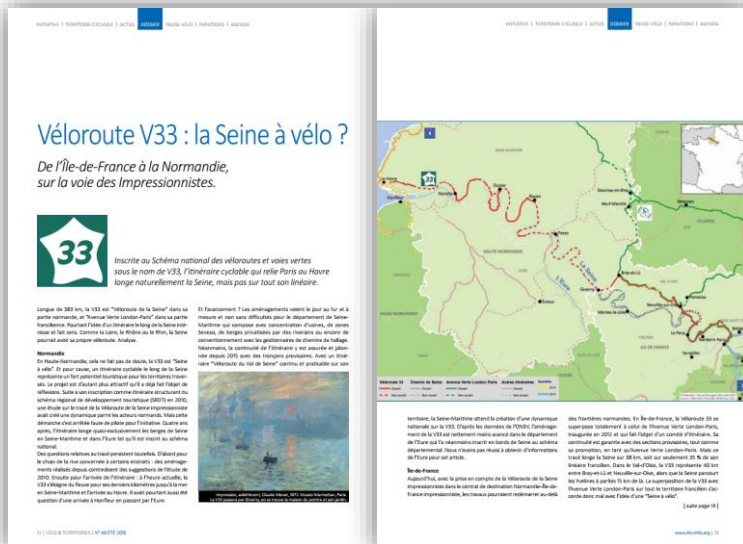
Production of many maps

Numerous calls and emails on the subject

One article in the magazine  
« Vélo & Territoires »

One diagnosis

One presentation  
of the project



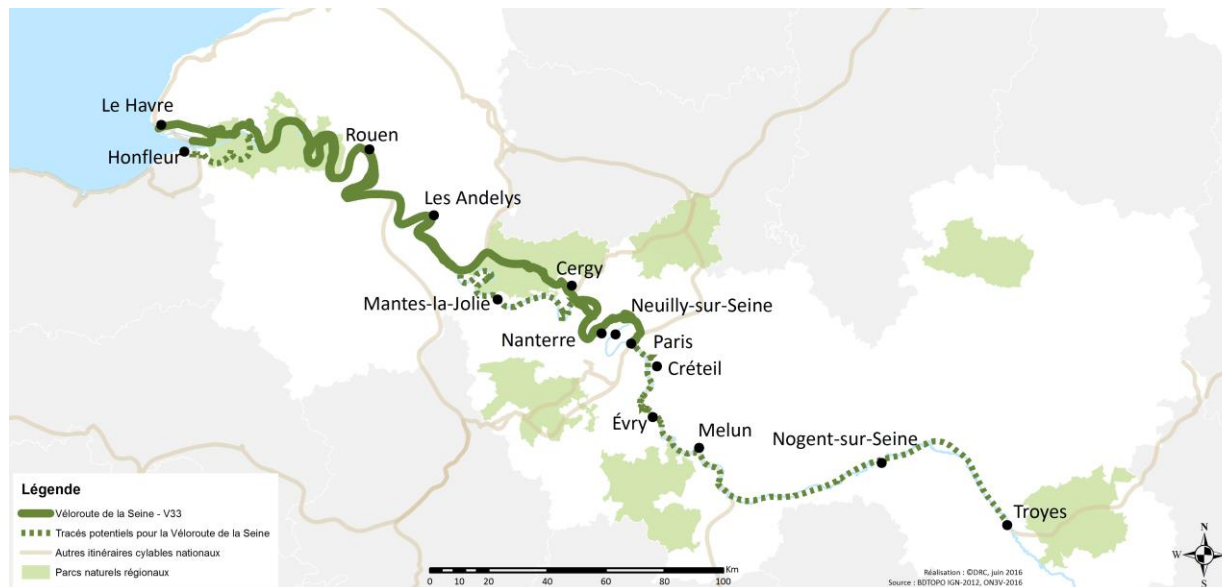


# WHAT HAS BEEN ACHIEVED ?

## 1 Political « Declaration of intention »

*More than 25 elected representatives signed it*

A final meeting with **7 suggested measures** in order to launch the partnership



# WHAT CAN BE LEARN FROM THIS EXPERIENCE ?

- + Too much political challenges is better than not enough
- + Financial frameworks can boost a project
- + A dynamic depends on the people that take part in it
- + Diagnosis and analysis create a common idea of the project and its needs




# THANKS FOR YOUR ATTENTION

---



 DÉPARTEMENTS & RÉGIONS CYCLABLES  
[www.departements-regions-cyclables.org](http://www.departements-regions-cyclables.org)

 +33 (0)9 72 56 85 05

## Contact

 Départements & Régions Cyclables  
52, avenue Maréchal Foch  
69006 LYON

 [info@departements-regions-cyclables.org](mailto:info@departements-regions-cyclables.org)

 Départements & Régions Cyclables

 @DRC\_info